

**NEW  
COLLECTION**

20 / 21

**butech**





# butech

## Spirit of innovation

BUTECH has invested in the latest technology to develop technical solutions which facilitate the commissioning and delivery of even better designs using PORCELANOSA ceramics.

Over the last few years, BUTECH has introduced innovative installation materials, decorative profiles, shower tray and levelling systems which have become an industry standard. Moreover, BUTECH is a leading company in innovation and development of façade systems for the various cladding materials from Grupo PORCELANOSA: STON-KER, PAR-KER, URBATEK, XLIGHT, NATURAL STONE AND KRION.

## Trusted professional solutions

BUTECH is part of Grupo PORCELANOSA, a world leader in the design and production of superior quality ceramics. Following on from adhesives and sealing materials for ceramics, BUTECH has evolved to more complex installation systems such as façades and technical flooring.

BUTECH's main aim is to provide PORCELANOSA customers with materials and installation systems which enable successful installation of any type of ceramic flooring or cladding.

BUTECH knows what every kind of ceramics needs and offers technical as well as decorative solutions which allow its installation with total success guarantee.



# index

- 4 pool-deck
- 6 black linear grate
- 7 squared grates
- 8 imperband deck kit
- 9 reco
- 10 decorative profiles
- 11 anticracking mat
- 12 **UNIT/SYSTEMS**

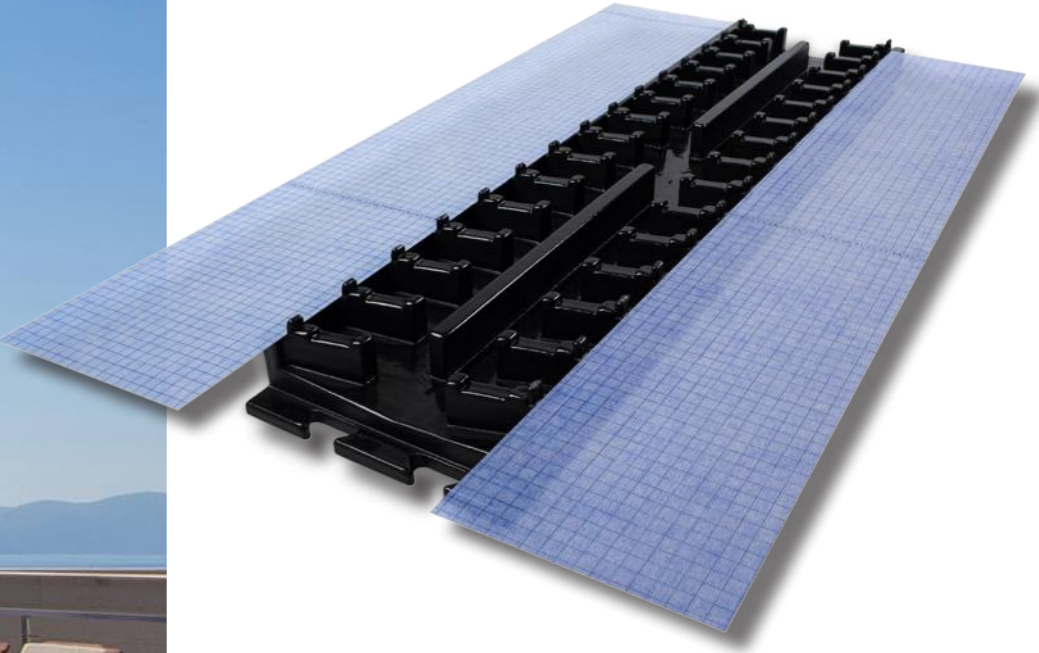
**butech**





# pool-deck

**Drainage system for swimming-pools and terraces**



Currently there is no prefabricated drainage channel system for tiled pools. The building company designs it and executes it, improvising its design at all times, with the high cost and time which this process entails.

butech develops solutions to meet the needs that the tile market demands, offering a complete solution to ease the designer obtaining a comprehensive aesthetic with absolute safety and guarantee of finish, easy maintenance, longevity and resistance to low temperatures (ice) and chemical resistance demanded by swimming pool applications.

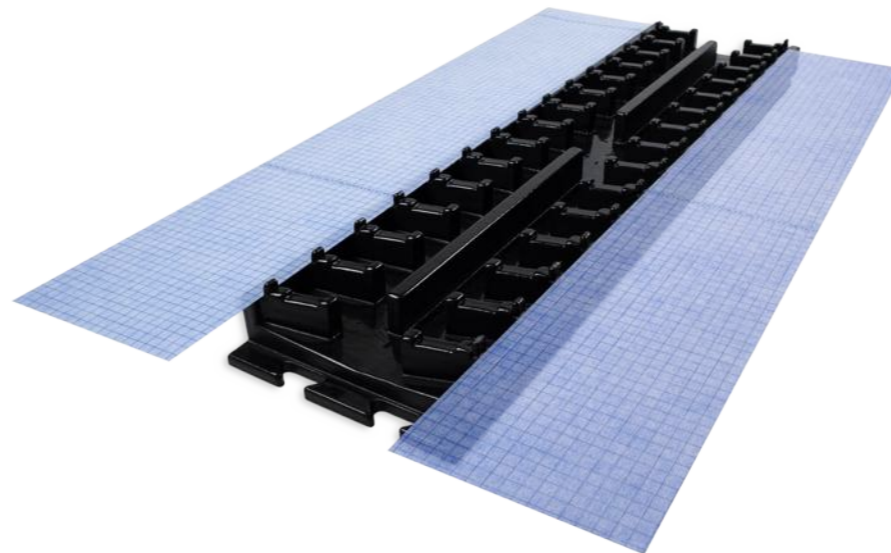
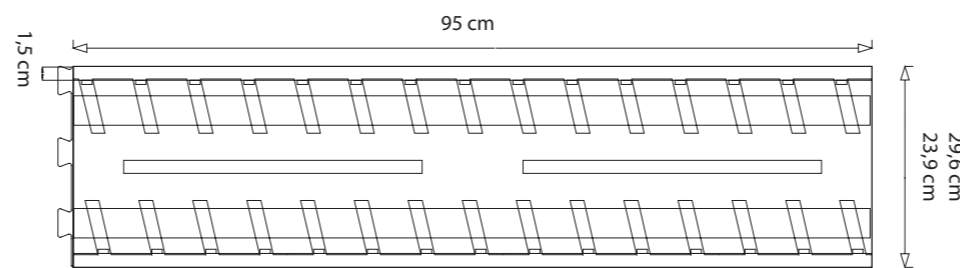


# pool-deck

The system consists of a series of elements that, once connected, form a drainage channel for swimming pools and terraces, ready to be covered with tiles. All the parts of the pool-deck system are available for these tile widths: 193 mm and 250 mm.

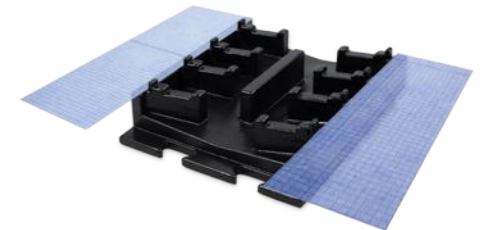
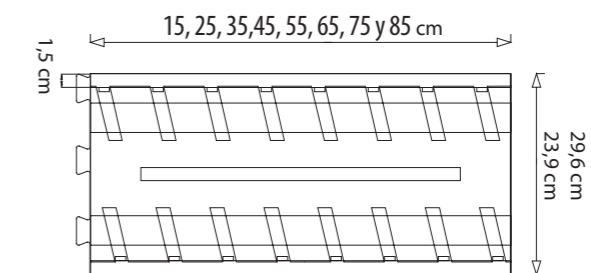
## pool-deck channel

95 cm long channel with internal V-slope, which includes heat-sealed IMPERBAND waterproofing sheet over the eaves of the channel.



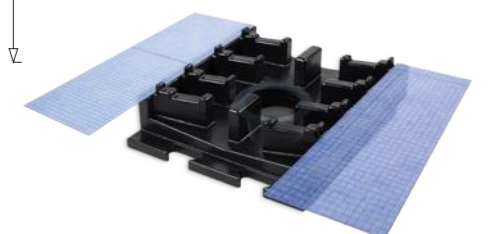
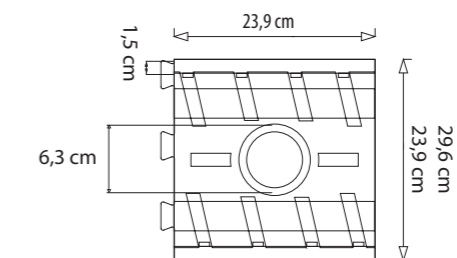
## pool-deck adjustment channel

Adjustment piece of different length measurements with internal V-slope, which includes heat-sealed IMPERBAND waterproofing sheet over the eaves of the channel. To complete the measurement required by the installation, these pieces will be available in the following measures: 15, 25, 35, 45, 55, 65, 75 and 85 cm.



## pool-deck drain

Drain piece with internal V-shaped slope, which includes IMPERBAND waterproofing sheet heat-sealed over the eaves of the channel and a special drain designed for this system that withstands high pressures and is resistant to products commonly used in swimming pools.





# black linear grate



**black linear grate** 59,6x9,3 cm  
B82902213 100278946



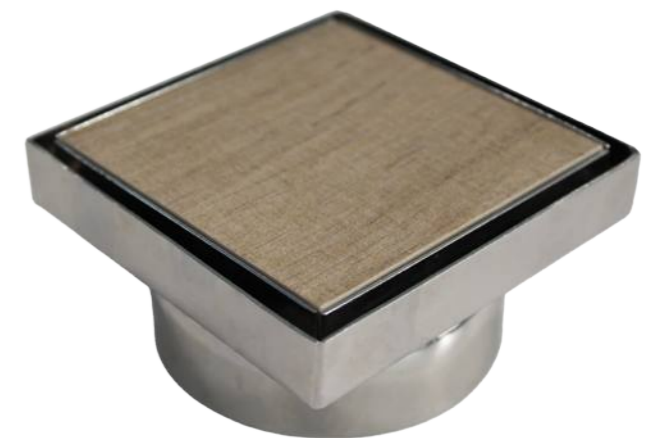




# squared grates



**chrome square grate** 59,6x9,3 cm  
B82902251 100293010



**tile square grate** 59,6x9,3 cm  
B82902252 100293012





# imperband deck kit

New waterproofing system for ceramic parquet covered shower trays; specially designed for PORCELANOSA Grupo's PAR-KER and STARWOOD lines.

In this system, the traditional metal grid is replaced with a ceramic piece so that the drain system is hidden from sight. Professional use. PAR-KER and STARWOOD is compatible with shower trays that have one, two, or four slopes, draining only through an open joint in the shower tray covering.

A new invisible drain concept, for the best bathroom designs.





## r eco

**Additive for cement-based adhesives.  
Made of 100% recycled plastic materials.  
Professional use.**

r eco is the first adhesive additive for ceramic tiles installation that includes recycled plastic, helping to reduce pollution by plastics in oceans and continents.

r eco includes 250 gr of 100% postconsumer recycled plastic, equivalent to 50 supermarket bags; if all the tiles produced by PORCELANOSA Grupo were installed with r eco, it would reduce 800 Tm / year of plastic spills, that represents 0.01% of the total plastics poured to the oceans.

r eco 250 gr

BI690I002

I00277878





# anti-cracking mat

**Decoupling sheet for floors undergoing low and medium movements.**

It reduces the transfer of tensions and stresses between the substrate and the flooring, protects the flooring against the appearance of cracks in the substrate or sideways movements between the slabs forming the substrate and allows ceramic or natural stone flooring to be laid on substrates and structures with medium and low movements such as wooden panels.

Suitable for indoor and outdoor use.

**Features:**

- ♦ Closed-cell elastomer sheet coated on both sides with non-woven fibers that allow cement-based adhesives to be anchored.
- ♦ It allows for direct laying of ceramic tiles with cementbased adhesive types C2 S1 according to EN 12004.

**anti-cracking mat** roll 15 m<sup>2</sup>  
B85900058 100227223



**UNITAS SYSTEMS**

**butech**





# UNIT/SYSTEMS

It is currently common in the construction industry to speed up manufacturing and onsite installation processes to reduce lead times.

To achieve this goal, a customized study of each project is the key requirement, with efficiency and quality control as essential features.

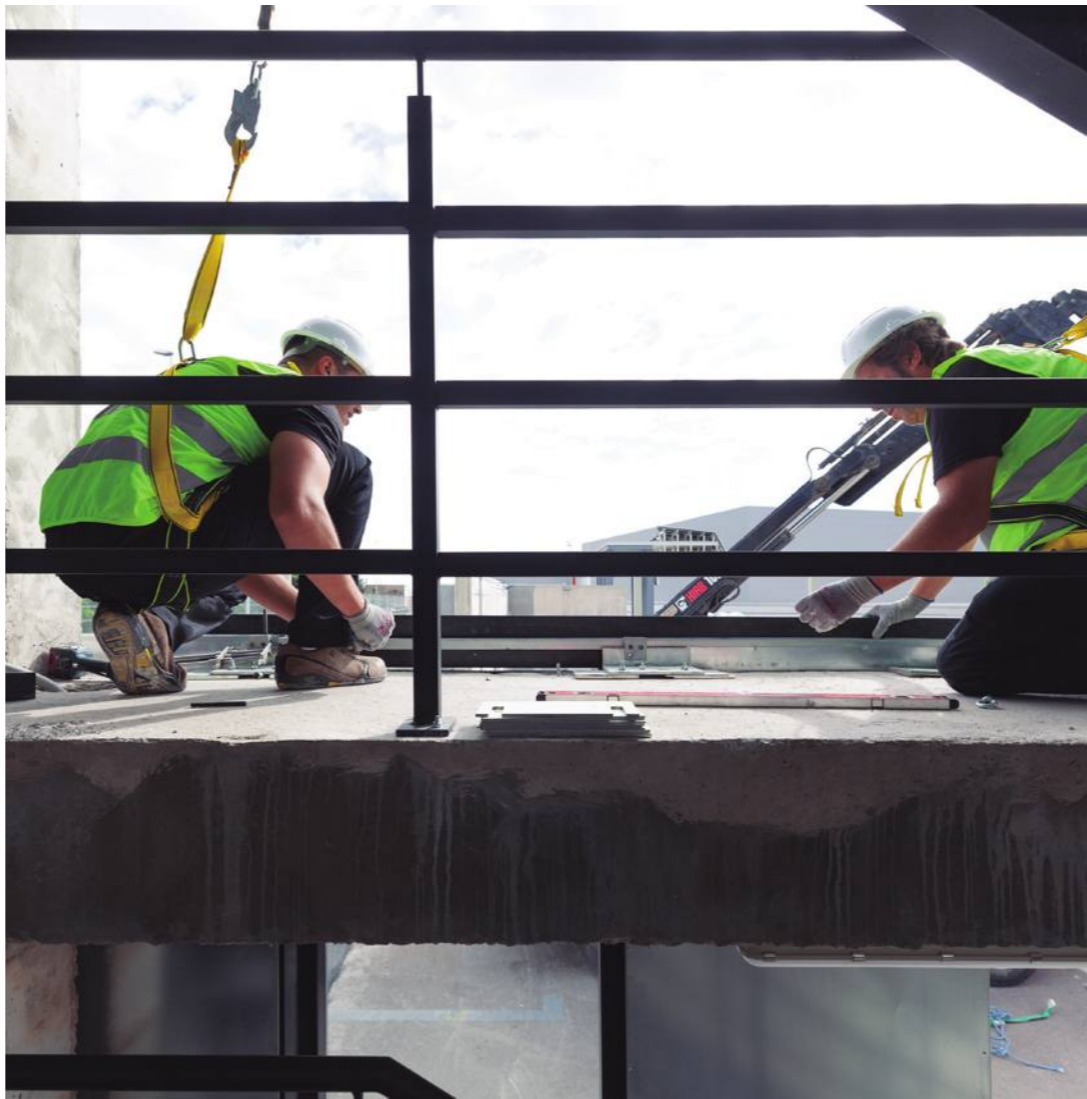
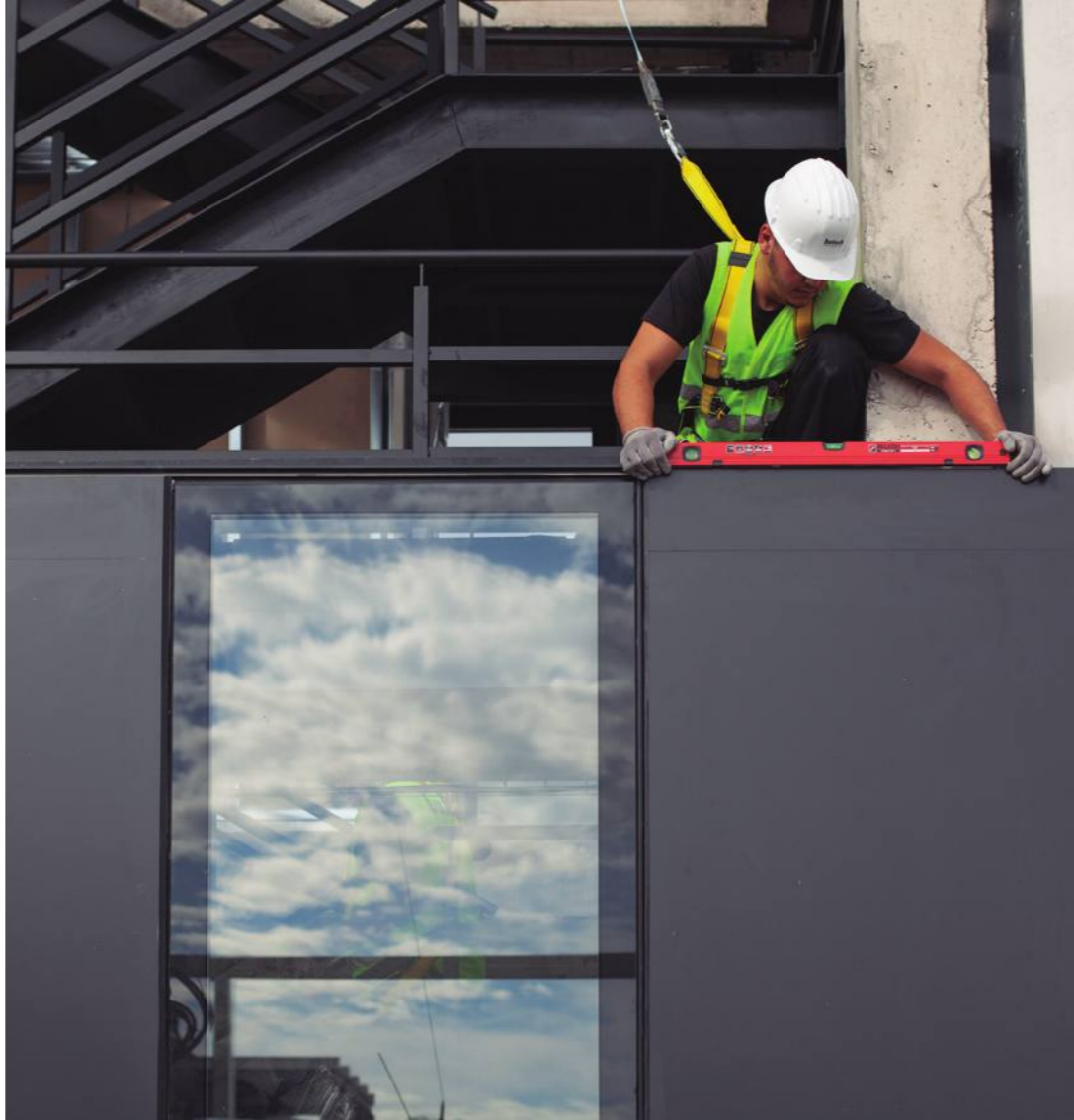
In addition to the need to meet ever-tighter deadlines, end users are more demanding about the quality of finishes, especially when it comes to high-end products. This market trend represents an excellent opportunity to expand our range of products and services.

This is why we created UNIT-SYSTEMS, a new construction solution with the guaranteed quality of the PORCELANOSA Group.

A new line of construction systems that are finished and ready for onsite installation, consisting of:  
Nueva línea de sistemas constructivos acabados y listos para su puesta en obra, compuesta por:

- ♦ **MODFACADES: Modular façades**
- ♦ **MONOBATH: Preassembled bath modules**
- ♦ **MONOKITCHEN: Preassembled kitchen modules**





# UNITAS SYSTEMS

## MODFACADES

The façade modules are fully finished when they leave our factory, with the requested PORCELANOSA insulation, frame and finish.

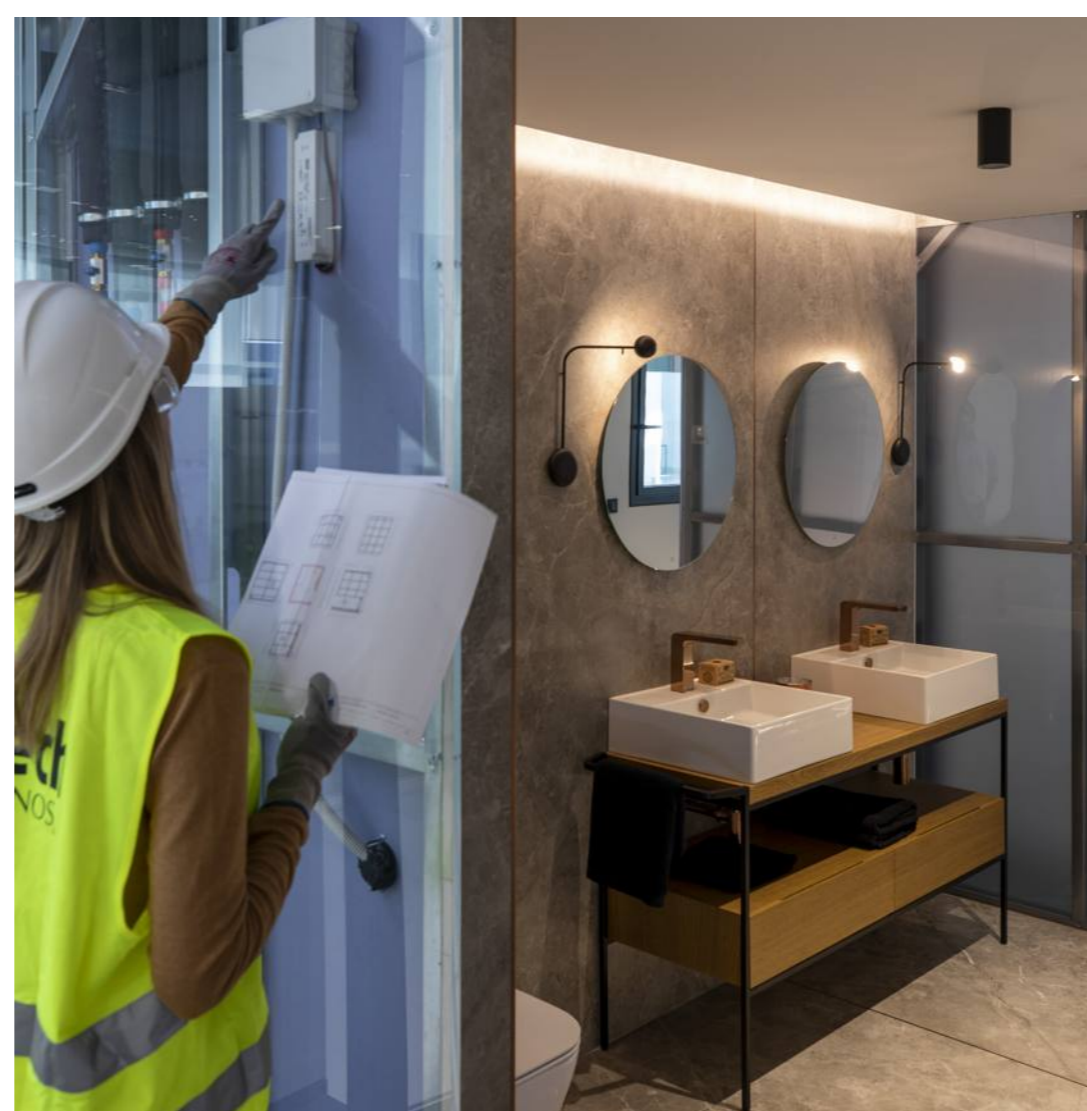
As it is secured on guide rails, it is easy to assemble and level the parts of the modular system, thus reducing onsite construction times.

It is currently common in the construction industry to speed up manufacturing and onsite installation processes to reduce lead times.

To achieve this goal, a customized study of each project is the key requirement, with efficiency and quality control as essential features.

In addition to the need to meet ever-tighter deadlines, end users are more demanding about the quality of finishes, especially when it comes to high-end products.





# UNIT/SYSTEMS

## MONOBATH MONOKITCHEN

The modules for bathrooms and kitchens include all interior finishes, furniture, bathroom fittings and accessories and the plumbing and wiring, all ready for use.

A construction system that ensures quality and reduces lead times.

Quick and effective onsite installation; placing the modules in their final location requires nothing more than a hoisting system and an opening in the wall through which the bathroom or kitchen can pass.



Our services have the following features:

- Customization of each project
- Quality
- Efficiency
- Sustainability
- Speed
- Control

All of the benefits of having a single partner with the guaranteed quality of the PORCELANOSA Group.

### Process:

#### Engineering

Customized study to achieve optimal technical solutions.

Butech's technical team, with extensive experience in ventilated façades and modular systems, is ready to assist PORCELANOSA's customers in all phases of project development; from modular design and choosing materials to final onsite installation.

A highly qualified team that develops projects both at home and abroad.

#### Production

Manufactured with finishes of the highest quality: 100% Porcelanosa.

State-of-the-art installations for products with high added value.



#### Quality control

The expertise of our team and resources at our disposal allow us to perform standard testing in our facilities and control the traceability of our products.

Strict compliance with the most demanding domestic and international regulations.

Quality and Guarantee: 100% PORCELANOSA.

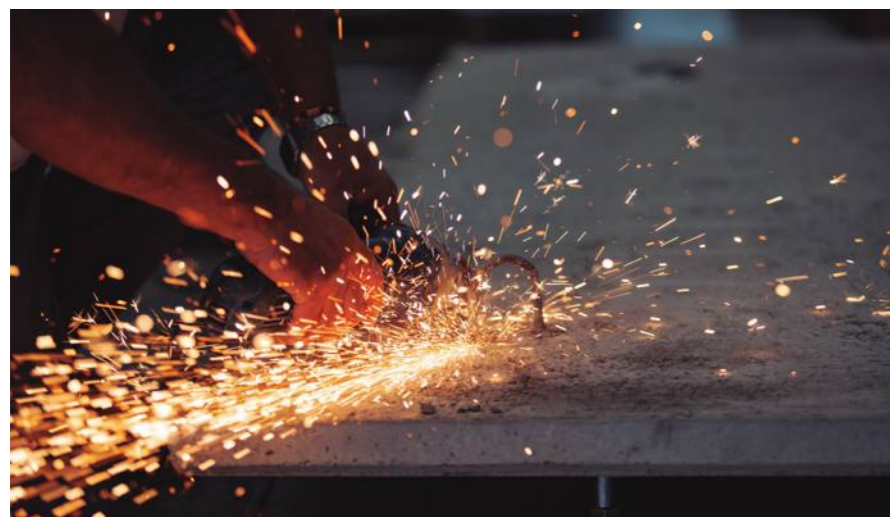


#### Logistics

Packaged and shipped to anywhere in the world.

Our logistical capacity and experience allows us to take on projects in any part of the world.

Perfectly packaged units, ready to be shipped and easy to install onsite.



#### Installation

Quick and precise installation for experienced professionals.

Everything from local projects to large international projects, our teams ensure the correct installation and assembly of our UNIT SYSTEM modular systems.



**butech**

**NEW  
COLLECTION**

20 / 21